

**PORODO**  
LIFESTYLE



**Porodo Lifestyle**  
**2 IN 1**  
**Portable Bidet & Shower**

SKU: PDLFSTPB55WH

# Table of Contents

Product Overview	2
Specifications	2
Product Features	3
Safety Precautions	4
Prohibitions	5
Package Contents	6
Operation Instructions	7
Charging Instructions	9
Disposal	10
Warranty	11
Contact Us	11

## Product Overview

The Porodo 2-in-1 Portable Bidet & Shower with detachable nozzles offers a convenient and efficient solution for personal hygiene needs. Designed to be lightweight and compact, this device features a dual water inlet, allowing for customizable water flow at both low and high rates. The shower hose extends up to 1.2 meters, making it ideal for both home and travel use. With an IPX6 waterproof rating, the product is durable and safe to use even in wet conditions. It has a high-efficiency pumping system, providing up to 100 minutes of working time. The device is easy to operate and charge, offering comfort and cleanliness wherever needed.

## Specifications

Input	5V/1A
Material	ABS / Silicone Water Pipe
Rated Voltage	DC 3.7V
Rated Current	≤1.5A
Pump's Power	5.55W
Battery Capacity	1600mAh
Working Time	60-100 Minutes
Charging Time	3 hours



Water Flow Rate	0.8L/min (Low Rate) - 1.1L/min (High Rate)
Hose	1.2m
Waterproof Rating	IPX6
Product Size	70 x 96 x 211mm
Model Number	PDLFSTPB55

## Product Features

### 1. Dual Water Inlet:

The bidet features dual water inlets, allowing for versatile use with both water bottles and direct plumbing connections, enhancing convenience when you're on the go.

### 2. Long Shower Hose:

The long 1.2-meter hose gives flexibility and reach, allowing users to comfortably use the bidet or shower in various situations, whether it's outdoors, camping, or traveling.

### 3. Compact & Lightweight:

The design is sleek, lightweight, and portable, making it easy to carry and store. It's perfect for travel, outdoor activities, or anyone in need of a compact cleaning solution.

### 4. Waterproof Rating (IPX6):

With an IPX6 waterproof rating, this device is designed to withstand water splashes and heavy rainfall, making it ideal for outdoor use in various weather conditions.



### **5. High-Efficiency Pumping:**

The bidet is equipped with a high-efficiency pump that ensures a steady and reliable water flow for optimal cleaning performance.

### **6. Long Working Time:**

The device can operate continuously for up to 100 minutes, making it ideal for long periods of use without requiring frequent recharging.

### **7. Charging via USB:**

Convenient USB charging means you can easily power the device using a variety of adapters or power banks, which is essential for portable use when traveling.

### **8. Detachable Nozzles:**

The shower and bidet heads are detachable, providing additional flexibility and hygiene. You can easily swap them out or clean them thoroughly after use.

## **Safety Precautions**

**1. Temperature Range:** Operate the device only with water between 10°C and 50°C to ensure safe and optimal performance.

**2. Choking Hazard:** The bidet assembly contains small parts that could pose a choking hazard. Keep away from children.

**3. Water Drainage:** If the product contains water, place it flat or upright and drain the water through the bottom drainage hole.

**4. Battery Charging:** Charge the device promptly when the battery is low. During charging, the digital display will show an upward count, and it will remain steady when fully charged.

**5. Heat Generation:** The main unit may generate heat during prolonged use due to normal energy conversion. Handle with care.

**6. Clean Water:** When using a water bottle, ensure that only clean water is used to maintain hygiene and prevent damage.



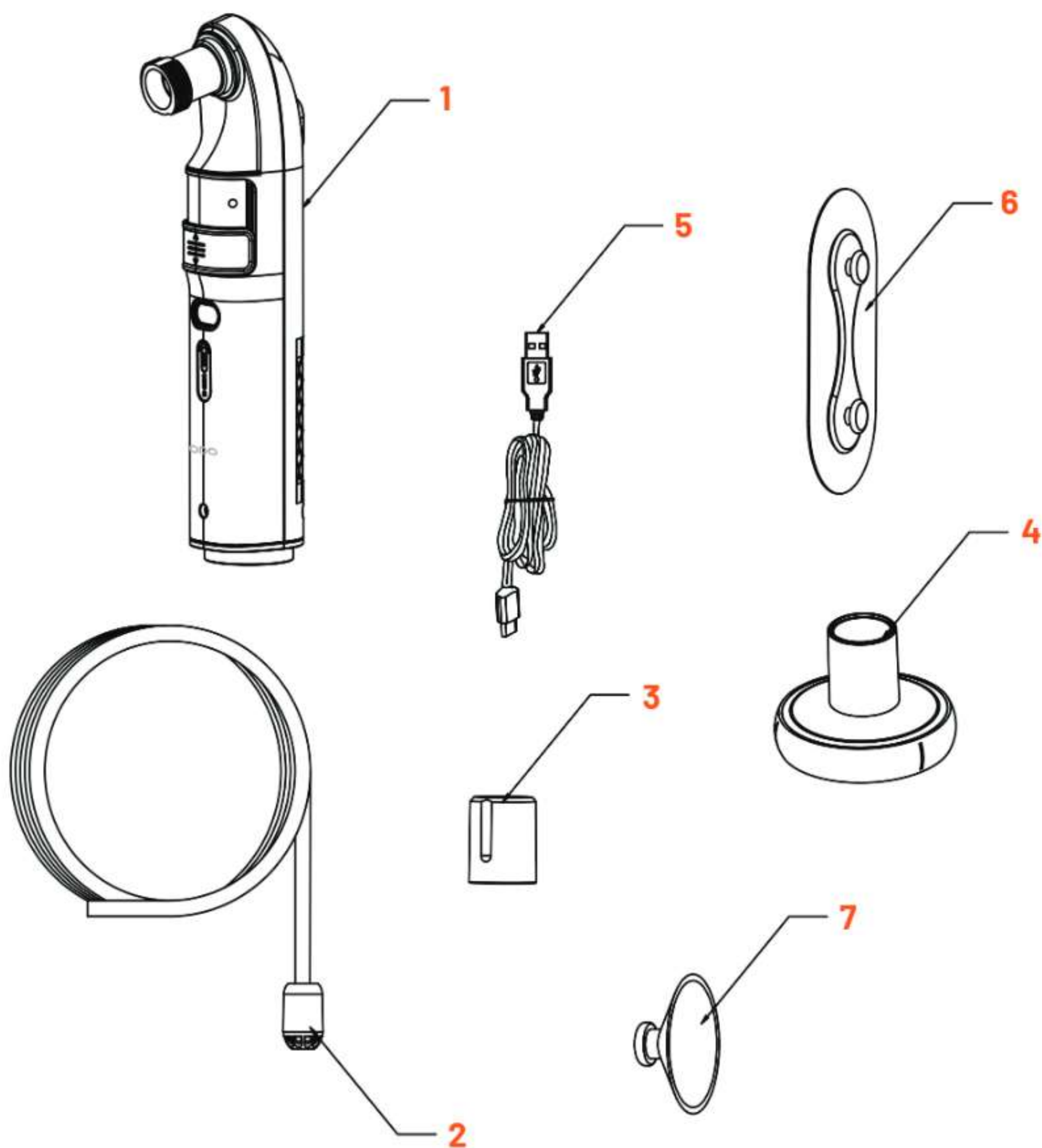
## Prohibitions

- 1.** Do not leave the appliance unattended when in use. Always switch off the power when not in use.
- 2.** Use only as described in the manual, with the recommended attachments and replacement parts.
- 3.** Avoid using the device with water from the sea or muddy/dirty water from pools or rivers.
- 4.** Ensure the charger port is tightly closed, and do not immerse the device in water.
- 5.** If operated by children, ensure proper instruction and attention are provided.
- 6.** Recharge the battery using the specified input (Output: 5V / 0.5-1A).
- 7.** Do not use damaged power cords or plugs. Only charge with the correct voltage as indicated on the rating plate.
- 8.** Ensure there are no broken or worn parts and that all screws are fully tightened before use.
- 9.** Keep the device away from heat and flames.
- 10.** Avoid freezing temperatures, as freezing can damage the motor and cord.
- 11.** Do not disassemble the device, as it will void all warranties.
- 12.** Do not charge the battery overnight or overcharge.





## Package Contents



- 1. Main device
- 2. Filter head
- 3. Bidet nozzle
- 4. Shower head

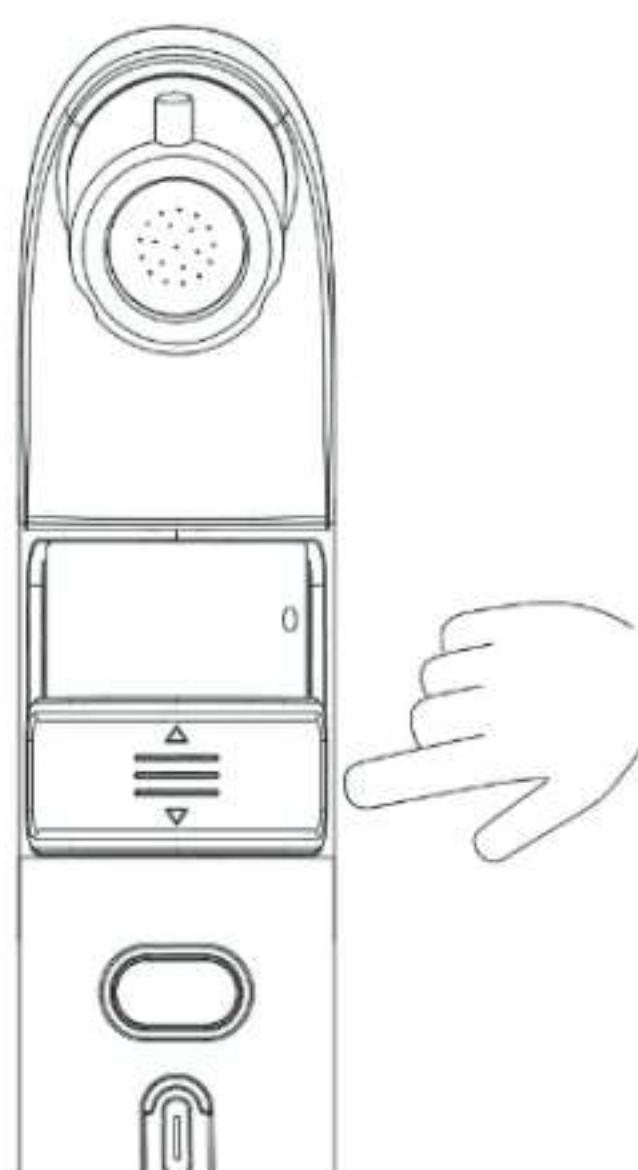
- 5. USB charging cable
- 6. Adhesive hanging hook
- 7. Suction cup

## Operation Instructions

**1. Attach Accessory:** Twist the Bidet Nozzle or Shower Head onto the device.



**2. Open/Close Protective Cover:** Slide open the protective cover to begin operation. After use, close the cover for storage. The button offers two adjustable settings, and the current mode is displayed on the screen.

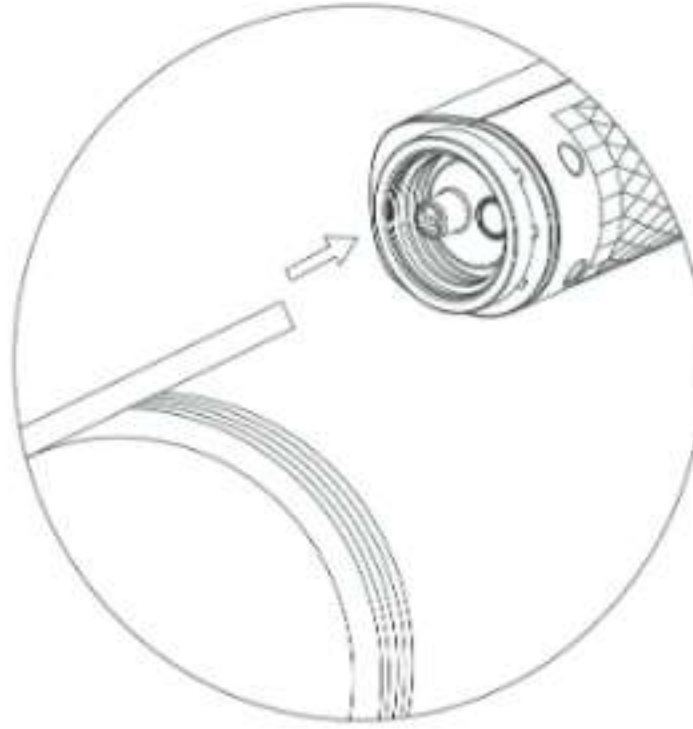




### **3.** This product supports two water inlet methods:

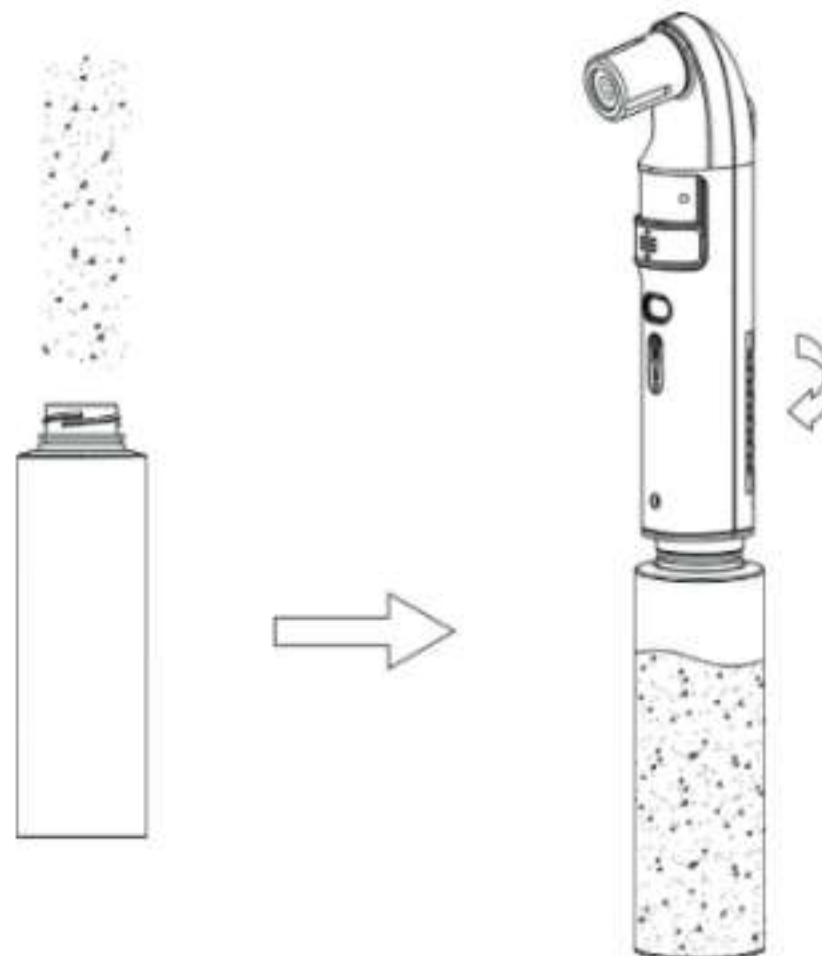
#### **a.** Hose Connection Method

The pillar on the base cover connects to one end of the hose. Place the other end (with the filter) into the water source. This method allows vertical use of the device.



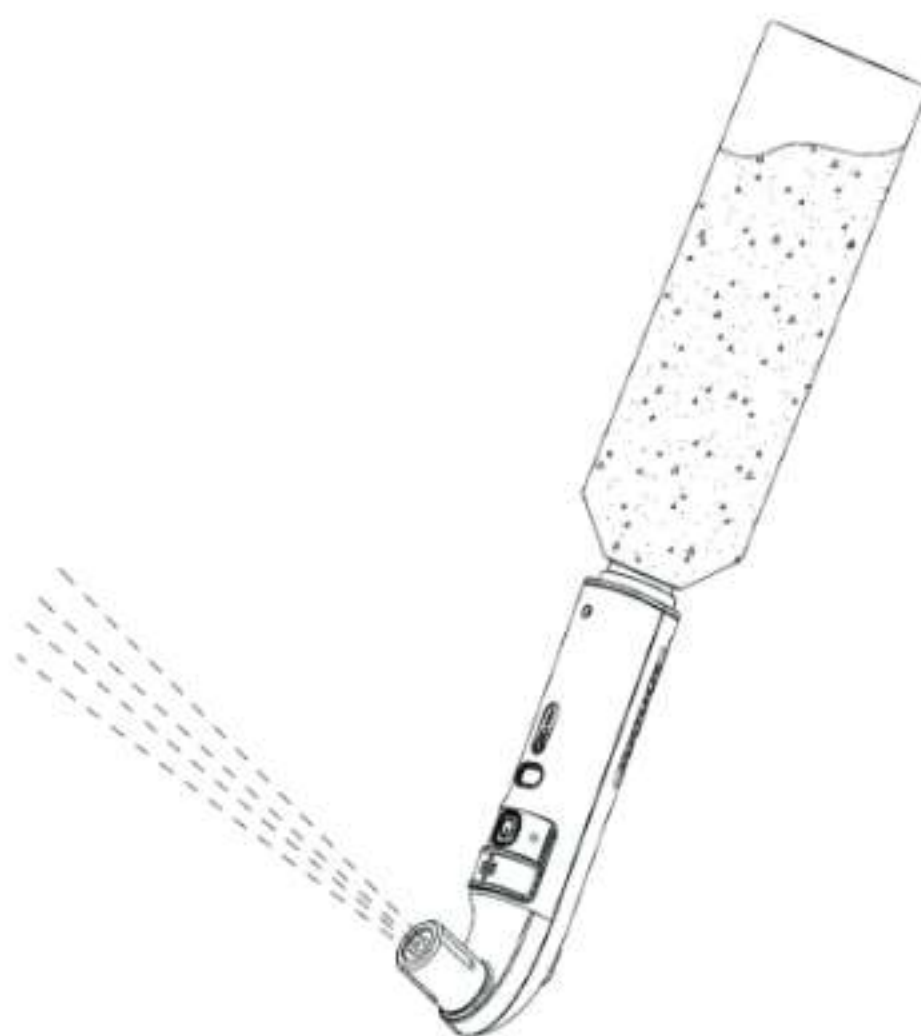
#### **b.** Bottle Attachment Method

The threaded base allows you to attach standard water bottles. First, fill the bottle with clean water, then screw it securely onto the main unit.

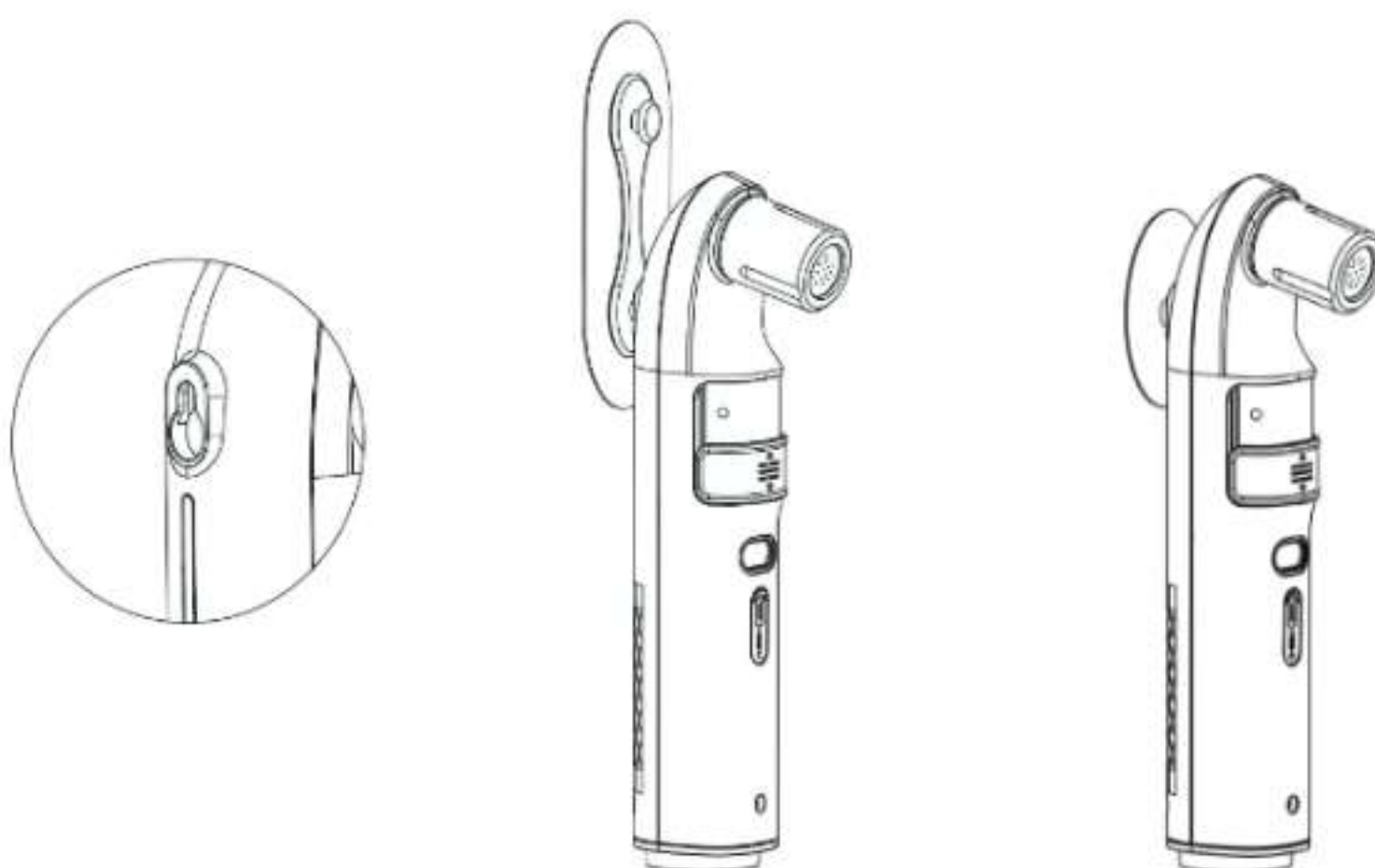


#### **c.** Using the device inverted for cleaning

In this mode, the device operates with the bottle attached, allowing for effective cleaning.



- 4.** The product can be mounted on the wall using the built-in hook slot on the back and the included adhesive hook.



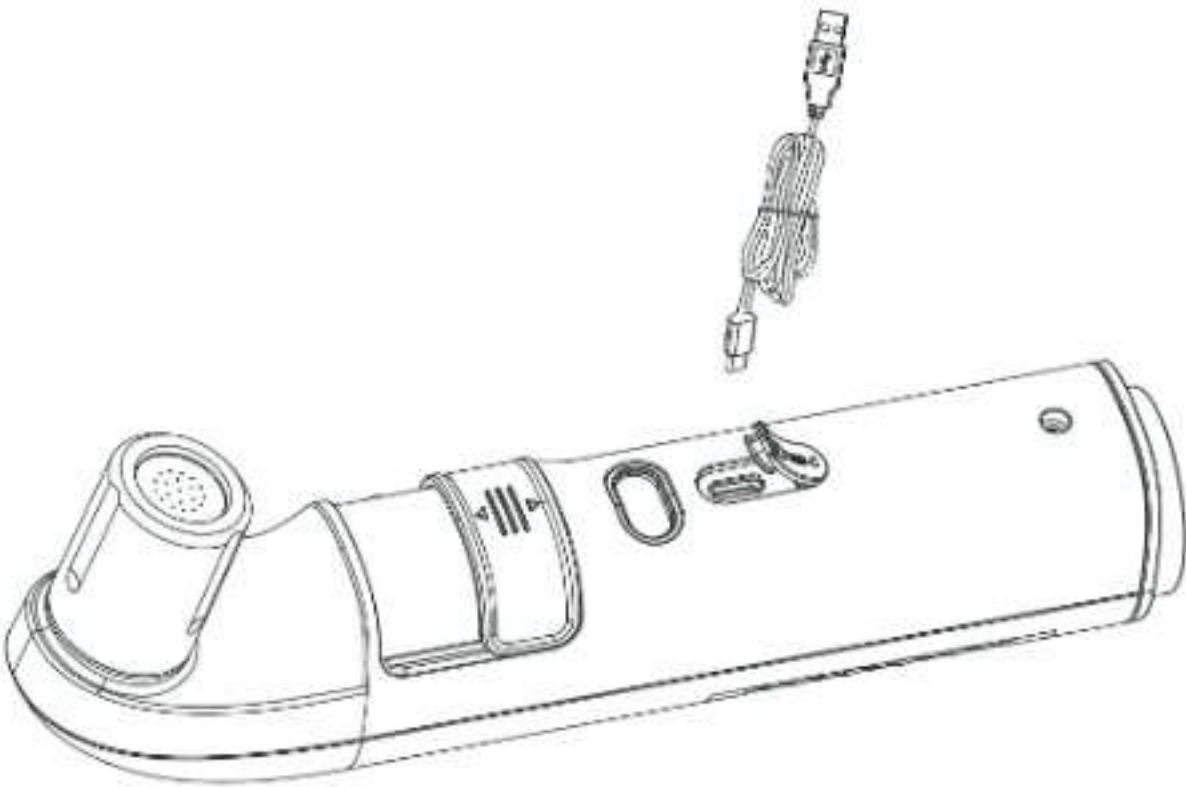
## Charging Instructions

- 1.** Open the socket cover on the device.
- 2.** Plug the USB cable into the device when the battery is low.
- 3.** Connect the USB charging cable to one of the following options:
  - a.** 5V Phone USB Charger
  - b.** Car USB Socket

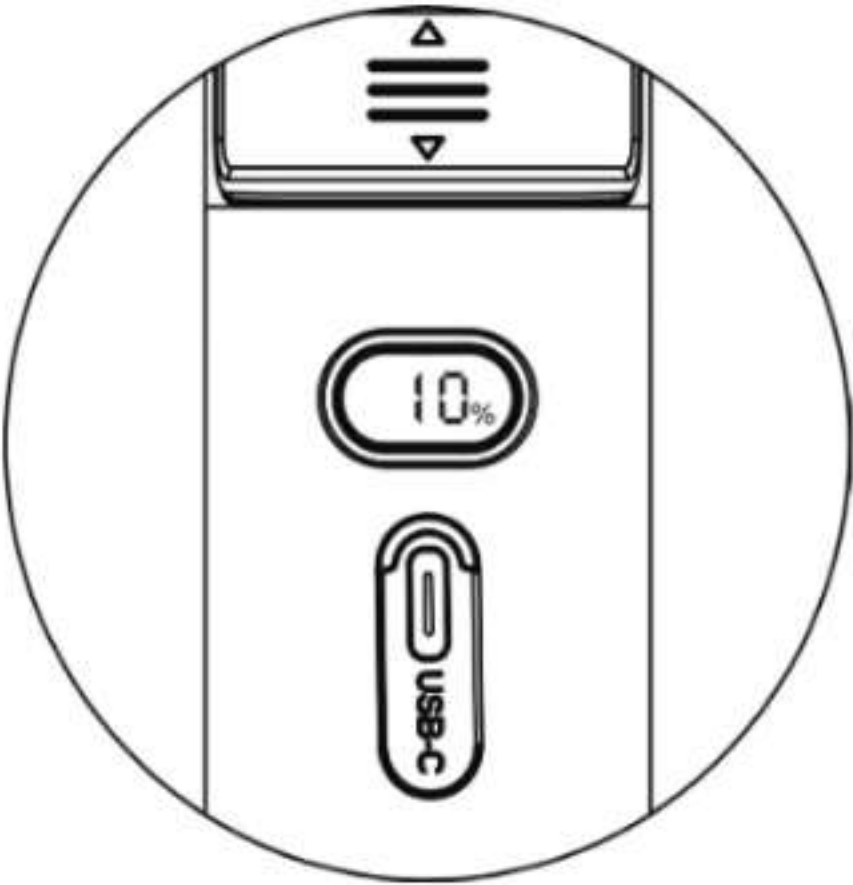


**c. Computer USB Socket**

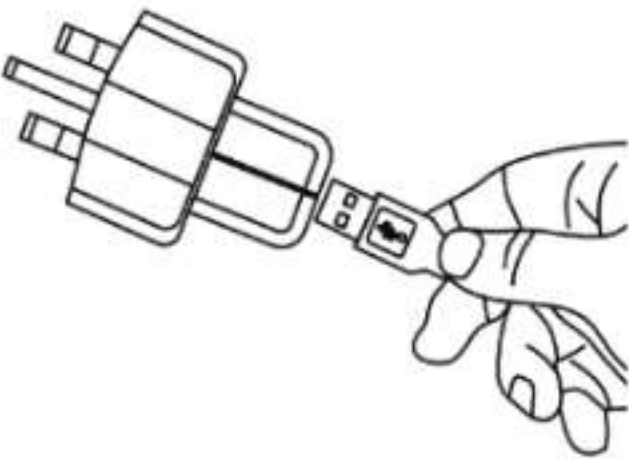
**Warning:** Do not use a charger with an output higher than 5V to charge the device, as it may damage the battery and cause fire or explosion.



1



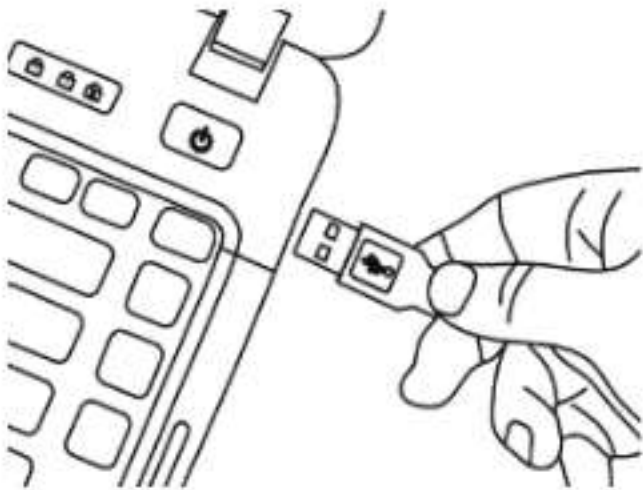
2



3a



3b



3c

**Disposal**

This product must not be disposed of as unsorted household waste. It is important to separate such waste for proper treatment and recycling, in compliance with local waste management regulations.

## **Warranty**

Products that you buy directly from our **Porodo** website or shop come with a 24-month warranty.

When you buy **Porodo** products from any of our approved sellers, you only get a 12-month warranty. If you want to extend this warranty, go to our website at **porodo.net/warranty** and fill out the form with your information. Don't forget to upload a picture of the product too. After we've checked and accepted your request, we'll send you an email to confirm that your product's warranty has been extended.

For more info, please check:  
**porodo.net/warranty**

## **Contact Us**

If you have any questions about this Privacy Policy, please contact us at:

**info@porodo.net**

Website: **porodo.net**

Service Support: **support@porodo.net**

Instagram: **porodo**